



# LONJAS · AVICULTURA DE PUESTA

Fecha: 31/10/2017

Teléfono: 961.494.507

Semana: 44

Email: lf.grand@nutreco.com



HUEVOS (euro/doc)	TOLEDO			MADRID			R E U S			HUEVOS (euro/doc)
	S. 43	S. 42	DIF	S. 44	S. 43	DIF	S. 44	S. 43	DIF	
XL	1.55	1.5	0.05	1.47	1.44	0.03	1.83	1.78	0.05	XL
L	1.51	1.45	0.06	1.45	1.42	0.03	1.76	1.71	0.05	L
M	1.31	1.25	0.06	1.39	1.35	0.04	1.66	1.6	0.06	M
S	0.99	0.95	0.04	1.27	1.23	0.04	1.35	1.31	0.04	S

HUEVOS (euro/doc)	ALEMANIA			FRANCIA			HOLANDA MAYORISTAS			HUEVOS (euro/doc)
	S. 44	S. 43	DIF	S. 44	S. 43	DIF	S. 44	S. 43	DIF	
XL	1.56	1.45	0.11	1.45	1.36	0.09	x	x	x	XL
L	1.44	1.36	0.08	1.36	1.3	0.06	1.43	1.38	0.05	L
M	1.26	1.21	0.05	1.23	1.16	0.07	1.26	1.21	0.05	M
S	0.96	0.9	0.06	1.16	1.09	0.07	1	0.91	0.09	S

Gallinas Matadero	SEMIPESADA (euros /Kg)			Ligera (Euros/Kg)			HOLANDA CAMPEROS			HUEVOS (euro/doc)
	S. 44	S. 43	DIF	S. 44	S. 43	DIF	S. 44	S. 43	DIF	
<1600	-	-	-	0.08	0.06	0.02	2.58	2.53	0.05	XL
1601/1700	0.13	0.11	0.02	0.09	0.07	0.02	1.57	1.51	0.06	L
1701/1800	0.15	0.13	0.02	0.11	0.09	0.02	1.48	1.43	0.05	M
1801/1900	0.17	0.15	0.02	0.12	0.1	0.02	1.01	0.95	0.06	S
1901/2000	0.19	0.17	0.02	1.13	0.11	1.02	INDUSTRIA HOLANDA			
2001/2100	0.2	0.18	0.02				S. 44	S. 43	DIF	
2101/2200	0.21	0.19	0.02				1.65	1.54	0.11	Euros/Kg
>2201	0.22	0.2	0.02							

## Otros informaciones no semanales // Comentarios

Nuevas subidas GENERALIZADAS

Aún nos queda alguna semana más de subida hasta la estabilidad.

La gallina acelera su precio.



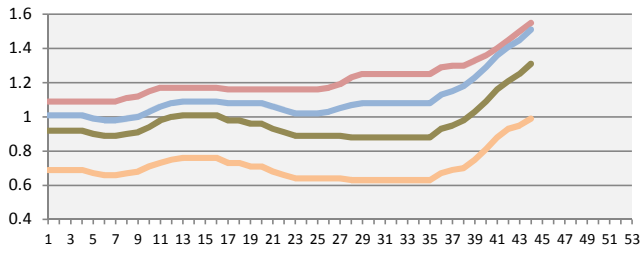
Creces más cuando creces mejor





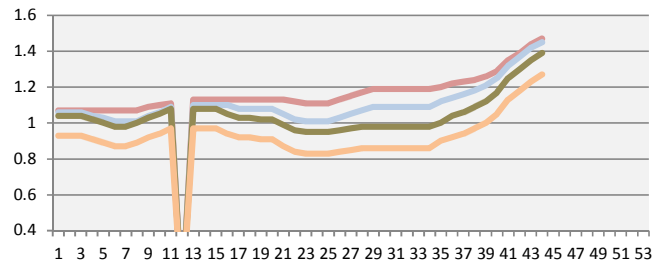
Toledo

XI L M S



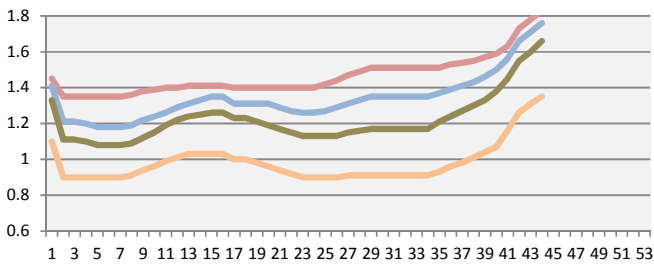
Madrid

XI L M S



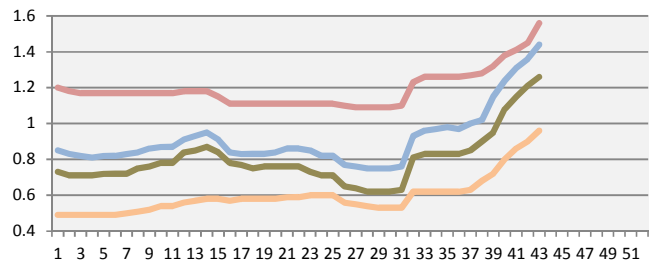
Reus

XI L M S



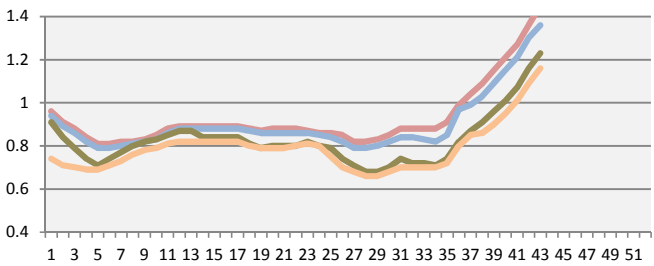
Alemania

XL L M S



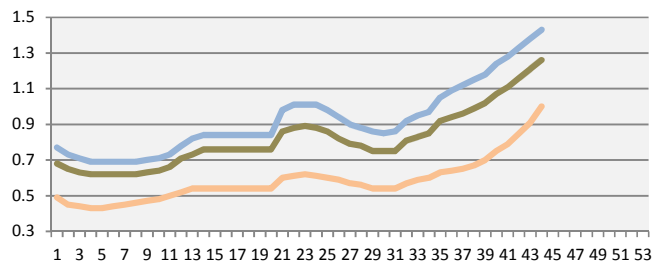
Francia

XL L M S



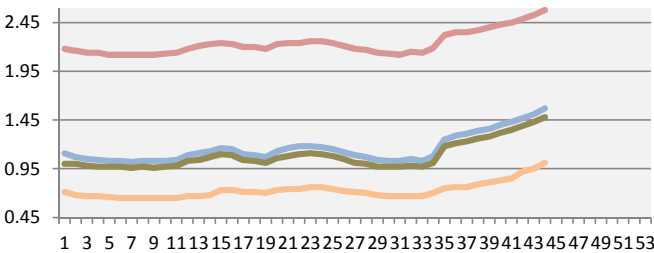
Holanda

XI L M S



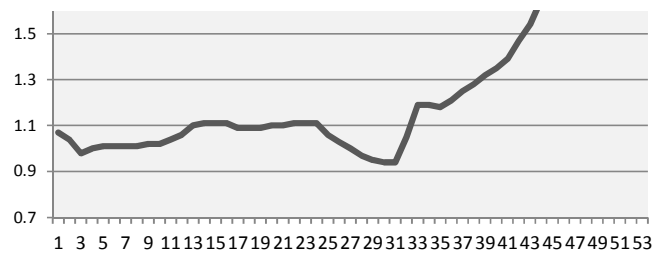
Campero Holanda

XI L M S



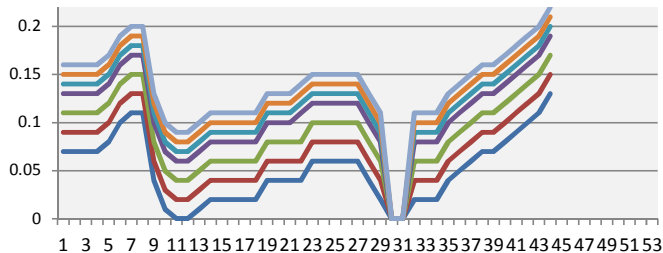
Industria Holanda

Euros/Kg



Gallina Semipesada

1601/1700 1701/1800 1801/1900 1901/2000  
2001/2100 2101/2200 >2201



Gallina Ligera

<1600 1601/1700 1701/1800  
1801/1900 1901/2000

